

MONTHLY MEMBERSHIP PROGRESS REPORT

District 318 A

Results as of: 8/31/2024

GMT:

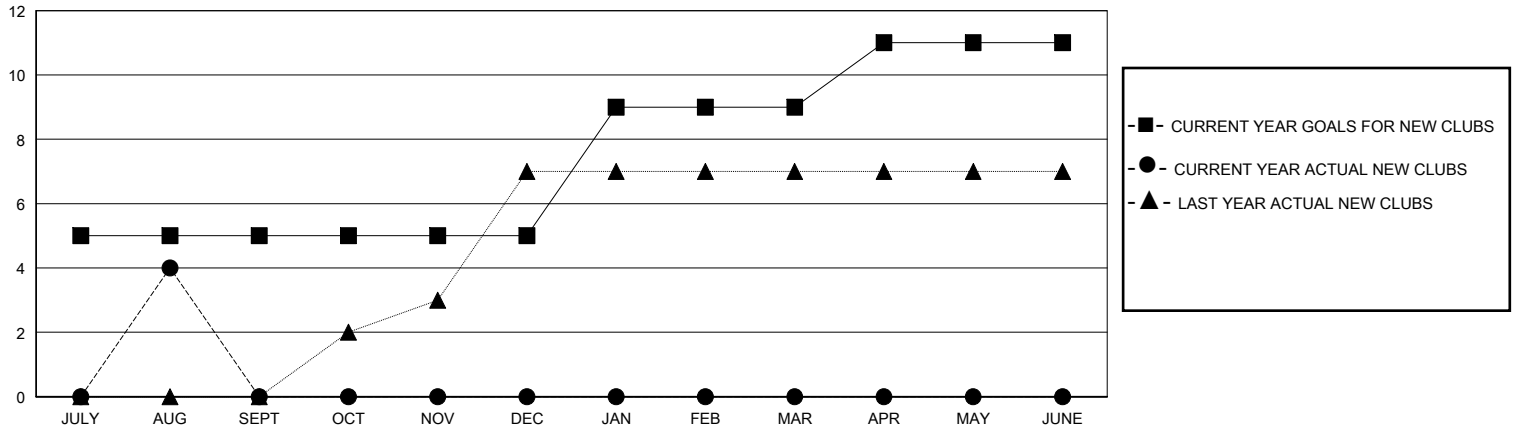
LOCATION INDIA

GMT CA

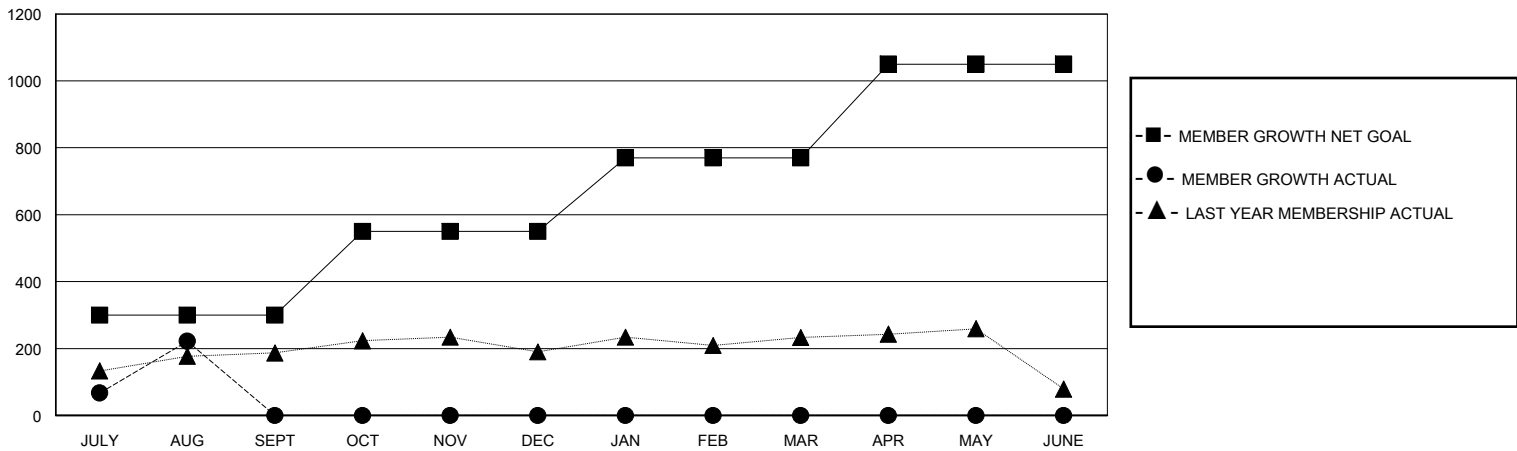
Clubs			
RESULTS FOR 2024-2025			
QUARTER	NEW CLUB GOAL	NEW CLUBS	DROPPED CLUBS
JULY/AUG/SEPT	5	4	1
OCT/NOV/DEC	0	0	0
JAN/FEB/MAR	4	0	0
APR/MAY/JUNE	2	0	0

Members			
RESULTS FOR 2024-2025			
QUARTER	MEMBER GROWTH NET GOAL	MEMBER GROWTH ACTUAL	DROPPED MEMBERS ACTUAL (including transfers)
JULY/AUG/SEPT	300	321	92
OCT/NOV/DEC	250	0	0
JAN/FEB/MAR	220	0	0
APR/MAY/JUNE	280	0	0

GOALS AND ACTUAL NEW CLUBS CUMULATIVE



GOALS AND ACTUAL MEMBERS CUMULATIVE



DROPPED CLUBS: 1	49 CLUBS OF 157 ADDED 1 OR MORE NEW MEMBERS	GENDER DISTRIBUTION MALE 3,452 (75.99%) FEMALE 1,090 (23.99%)
DROPPED MEMBERS DECEASED 5 CLUB CANCELLED 8 OTHER 79 TOTAL 92	CLICK HERE FOR CUMULATIVE MEMBERSHIP DATA	TOTAL FAMILY UNIT MEMBERS 1,677 FAMILY MEMBERS PAYING HALF DUES 897